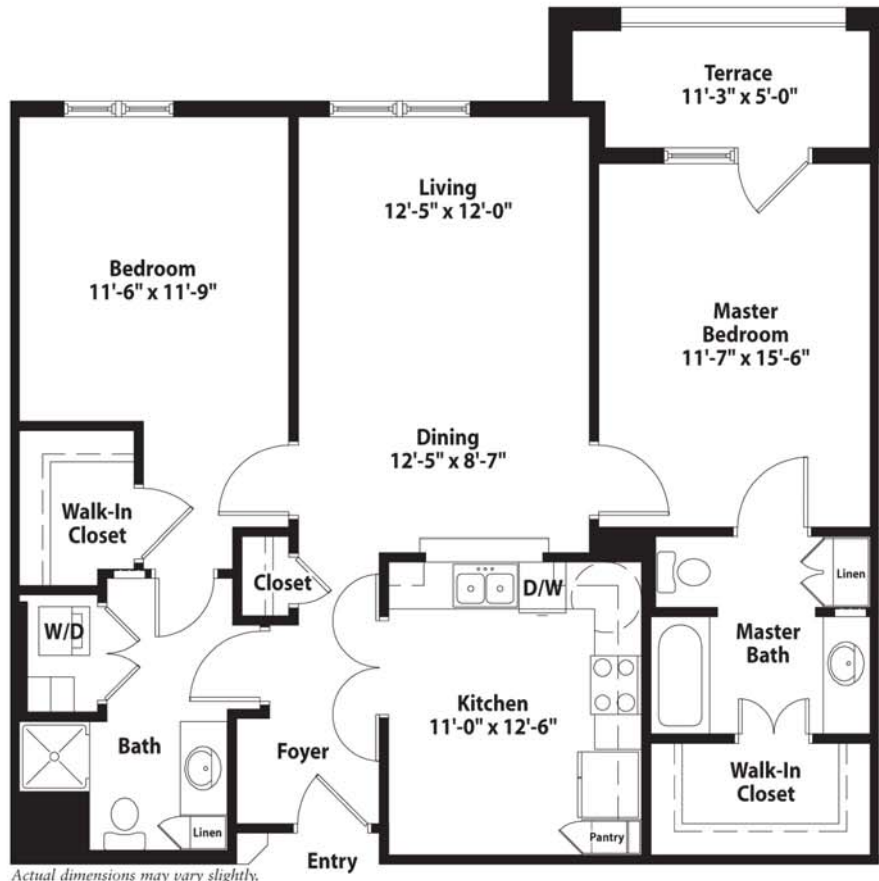


# THE CAPOTE

*Two Bedroom, Two Bath*



The Capote, located northeast of Candelaria, Texas, is a group of springs flowing from Quaternary gravel producing the beautiful Capote Falls, where it drops over an 180-foot-high cliff. There is a large buildup of travertine at the falls in the shape of a cape; hence the Spanish name, which means "cape" or "shroud."